

## Datalogic S.r.l.

Via San Vitalino 13  
40012 Calderara di Reno (BO)  
Italy  
Tel. +39 051 3147011  
Fax +39 051 3147205

### ©2023 Datalogic S.p.A. and/or its affiliates

All rights reserved. Without limiting the rights under copyright, no part of this documentation may be reproduced, stored in or introduced into a retrieval system, or transmitted in any form or by any means, or for any purpose, without the express written permission of Datalogic S.p.A. and/or its affiliates.

Owners of Datalogic products are hereby granted a non-exclusive, revocable license to reproduce and transmit this documentation for the purchaser's own internal business purposes. Purchaser shall not remove or alter any proprietary notices, including copyright notices, contained in this documentation and shall ensure that all notices appear on any reproductions of the documentation.

Electronic versions of this document may be downloaded from the Datalogic website ([www.datalogic.com](http://www.datalogic.com)). If you visit our website and would like to make comments or suggestions about this or other Datalogic publications, please let us know via the "Contact" page.

### Disclaimer

Datalogic has taken reasonable measures to provide information in this manual that is complete and accurate, however, Datalogic shall not be liable for technical or editorial errors or omissions contained herein, nor for incidental or consequential damages resulting from the use of this material. Datalogic reserves the right to change any specification at any time without prior notice.

### Trademarks


Datalogic and the Datalogic logo are registered trademarks of Datalogic S.p.A. in many countries, including the U.S.A. and the E.U.

Memor is a trademark of Datalogic S.p.A. and/or its affiliates. All other brand and product names may be trademarks of their respective owners.

## Support Through the Website

Datalogic provides several services as well as technical support through its website.

Log on to [www.datalogic.com](http://www.datalogic.com).

For quick access, from the home page click on the search icon , and type in the name of the product you're looking for. This allows you access to download Data Sheets, Manuals, Software & Utilities, and Drawings.

Hover over the Support & Service menu for access to Services and Technical Support.

# MEMOR™ 11/10

## QUICK START GUIDE



### Four Slot Battery Charger

### ©2023 Datalogic S.p.A. and/or its affiliates

• All rights reserved • Without limiting the rights under copyright, no part of this documentation may be reproduced, stored in or introduced into a retrieval system, or transmitted in any form or by any means, or for any purpose, without the express written permission of Datalogic S.p.A. and/or its affiliates • Datalogic and the Datalogic logo are registered trademarks of Datalogic S.p.A. in many countries, including the U.S. and the E.U.

[www.datalogic.com](http://www.datalogic.com)



822002812 (Rev. C) Sept. 2023

## OVERVIEW

The Memor 11/10 four slot battery charger simultaneously charges up to four spare batteries.

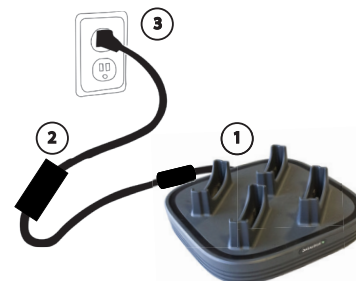
## PARTS AND FUNCTIONS



## SET UP

To prevent the risk of short-circuiting, connect wall power in the following order:

1. Connect the four slot battery charger to the power supply.
2. Connect the power supply to the power cord.
3. Connect the power cord to the wall outlet. The Power ON LED illuminates green.



## CHARGE THE SPARE BATTERIES

To charge up to four spare batteries:

1. Insert the spare battery into the slot with the contacts side facing down and then gently push it into place. Ensure the label side is facing front. The spare battery charge LED illuminates red.



2. When charging is complete, the spare battery charge LED turns green. Lift the battery out of the slot.



The spare battery pack recharging slot is compatible with the following Datalogic p/n: 94ACC0191 BATTERY, MEMOR 10.



**NOTE:** The Memor 11/10 four slot battery charger could get warm during charging, this is normal and does not mean a malfunction.



**CAUTION:** Annual replacement of rechargeable battery pack avoids possible risks or abnormalities and ensures maximum performance.

## LED INDICATORS

LED Behavior	Status
<b>Power ON</b>	
Solid green	Charger is powered
<b>Spare Battery Charger</b>	
Solid red	Spare Battery is charging.
Solid green	Charging is complete.

## TECHNICAL SPECIFICATIONS

Electrical Features	
Consumption	Max 3 A
Indicators Consumption	Power on LED (green) Spare battery charge LED (bicolored)
Environmental Features	
Working Temperature <sup>1</sup>	0°C to 40°C
Storage Temperature	-30°C to 70°C
Humidity	5-95% non-condensing
Mechanical Features	
Dimensions	165.8 x 165.8 x 57.3 mm / 6.5 x 6.5 x 2.25 in
Weight	475 g / 16.75 oz

## WEEE STATEMENT



### Waste Electrical and Electronic Equipment (WEEE) Statement

#### English

For information about the disposal of Waste Electrical and Electronic Equipment (WEEE), please refer to the website at [www.datalogic.com](http://www.datalogic.com).

#### Italian

Per informazioni sullo smaltimento delle apparecchiature elettriche ed elettroniche consultare il sito Web [www.datalogic.com](http://www.datalogic.com).

#### French

Pour toute information relative à l'élimination des déchets électroniques (WEEE), veuillez consulter le site internet [www.datalogic.com](http://www.datalogic.com).

#### German

Informationen zur Entsorgung von Elektro- und Elektronik-Altgeräten (WEEE) erhalten Sie auf der Webseite [www.datalogic.com](http://www.datalogic.com).

#### Spanish

Si desea información acerca de los procedimientos para el desecho de los residuos del equipo eléctrico y electrónico (WEEE), visite la página Web [www.datalogic.com](http://www.datalogic.com).

#### Portuguese

Para informações sobre a disposição de Sucatagem de Equipamentos Elétricos e Eletrônicos (WEEE -Waste Electrical and Electronic Equipment), consultar o site web [www.datalogic.com](http://www.datalogic.com).

#### Chinese

有关处理废弃电气电子设备 (WEEE) 的信息, 请参考 Datalogic 公司的网站 [www.datalogic.com](http://www.datalogic.com).

#### Japanese

廃電気電子機器(WEEE)の処理についての関連事項は Datalogicのサイト [www.datalogic.com](http://www.datalogic.com) をご参照下さい。

## BATTERY SAFETY GUIDELINES



**WARNING:** Dinstalling, charging and/or any other action should be done by authorized personnel and following this manual.

The battery pack may get hot, explode, ignite, and/or cause serious injury if exposed to abusive conditions.

If the battery pack is replaced with an improper type, there is risk of explosion.

Do not place the battery pack in or near a fire or heat; do not place the battery pack in direct sunlight, or use or store the battery pack inside unventilated areas in hot weather; do not place the battery pack in microwave ovens, dryer, high pressure containers, on induction cookware or similar device. Doing so may cause the battery pack to generate heat, explode or ignite. Using the battery pack in this manner may also result in a loss of performance and a shortened life expectancy.

Use only a Datalogic approved power supply. The use of an alternative power supply will void the product warranty, may cause product damage and may cause heat, explode or ignite.

The area in which the units are charged should be clear of debris and combustible materials or chemicals.

Immediately discontinue use of the battery pack if, while using, charging or storing the battery pack, the battery pack emits an unusual smell, feels hot, changes colour or shape, or appears abnormal in any other way.

Do not short-circuit the battery pack contacts connecting the positive terminal and negative terminal. This might happen, for example, when you carry a spare battery pack in your pocket or purse; accidental short-circuiting can occur when a metallic object such as a coin, clip, or pen causes direct connection of the contacts of the battery pack (these look like metal strips on the battery pack). Short-circuiting the terminals may damage the battery pack or the connecting object.

Do not apply voltages to the battery pack contacts.



**WARNING:** Do not pierce the battery pack with nails, strike it with a hammer, step on it or otherwise subject it to strong impacts or shocks.

Do not disassemble or modify (i.e. bend, crush or deform) the battery pack. The battery pack contains safety and protection devices, which, if damaged, may cause the battery pack to generate heat, explode or ignite.

In case of leakage of liquid from the battery, avoid contact with liquid the skin or eyes. If the contact occurs, immediately wash the affected area with water and consult a doctor.

Do not solder directly onto the battery pack.

Do not expose the battery pack to liquids. Avoid any knocks or excessive vibrations. If the device or the battery is dropped, especially on a hard surface, you should take it to the nearest Authorised Repair Centre for inspection before continuing to use it.

Do not remove or damage the battery pack's label.

Do not use the battery pack if it is damaged in any part.

Battery pack usage by children should be supervised.

## EUROPEAN DECLARATION OF CONFORMITY

Hereby, Datalogic S.r.l. declares that the full text of the European Declaration of Conformity is available at: [www.datalogic.com](http://www.datalogic.com). Select the Support & Service > Downloads > Product Certifications link where you can search for your specific product certification.

### UKCA Declaration of Conformity

Hereby, Datalogic S.r.l. declares that the full text of the UKCA Declaration of Conformity is available at: [www.datalogic.com](http://www.datalogic.com). Select the Support & Service >Downloads > Product Certifications link where you can search for your specific product certification.



## FCC COMPLIANCE

### FCC PART 15 B Statement

This device complies with part 15 of the FCC Rules. Operation is subject to the following two conditions: (1) This device may not cause harmful interference, and (2) this device must accept any interference received, including interference that may cause undesired operation.

Caution: The user is cautioned that changes or modifications not expressly approved by the party responsible for compliance could void the user's authority to operate the equipment.

Note: This equipment has been tested and found to comply with the limits for a Class B digital device, pursuant to part 15 of the FCC Rules. These limits are designed to provide reasonable protection against harmful interference in a residential installation. This equipment generates uses and can radiate radio frequency energy and, if not installed and used in accordance with the instructions, may cause harmful interference to radio communications. However, there is no guarantee that interference will not occur in a particular installation. If this equipment does cause harmful interference to radio or television reception, which can be determined by turning the equipment off and on, the user is encouraged to try to correct the interference by one or more of the following measures:

- Reorient or relocate the receiving antenna.
- Increase the separation between the equipment and receiver.
- Connect the equipment into an outlet on a circuit different from that to which the receiver is connected.
- Consult the dealer or an experienced radio/TV technician for help.

## ISED STATEMENT

Innovation, Science and Economic Development Canada ICES 003 Compliance Label: CAN ICES-3. Étiquette de conformité à la NMB 003 d'Innovation, Sciences et Développement économique Canada: CAN ICES 3.

<sup>1</sup>. Charging between 15 to 40 degrees is recommended to reach the maximum charging capability.